

Pole Mounting Brackets Installation Manual



For Safe Installation Work

This manual contains critical information regarding electrical and mechanical installation and safety information which you should know before starting installation.







- Stop work during stormy weather. Solar modules can be caught in the wind, causing you to fall.
- Never step or sit on the glass surface of a solar module. The glass may break, resulting in shock or bodily injury. The module may also stop generating power.
- Always use the supplied parts to attach the solar modules and mounts. Use of weaker parts, such as screws that are too short, is dangerous and may cause the solar modules or mounts to fall.
- Always use the specified tools. The solar modules or mounts may fall if the installation is not strong enough, for example when parts are not tightened sufficiently.
- Do not modify or cut parts. Doing so is dangerous. Safety cannot be guaranteed.
- Product should be installed and maintained by qualified personnel. Keep unauthorized personnel away from solar module.


POINTS TO CHECK

- Determine the wind loads for the installation site. Check with your local building and safety department for the specific requirements. Make certain that the roof structure can support the live and dead loads resulting from the installation of the PV array.
- Install solar modules facing south, if possible. Installations facing east and west are also possible, although the amount of power generated will be lower.

Components List:

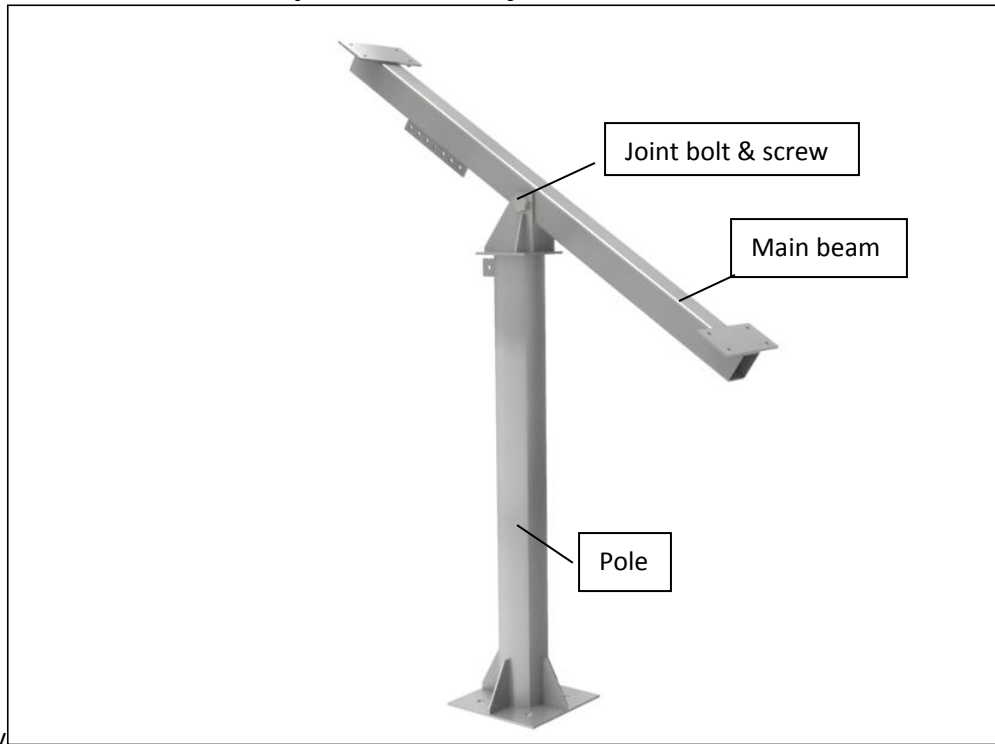
Model name	Pole	Joint Bolt & Screw	Main Beam	Adjustable Part
Picture				

Model name	U-Screw	Support Beam	Screw & Bolt	Conjunctions
Picture				

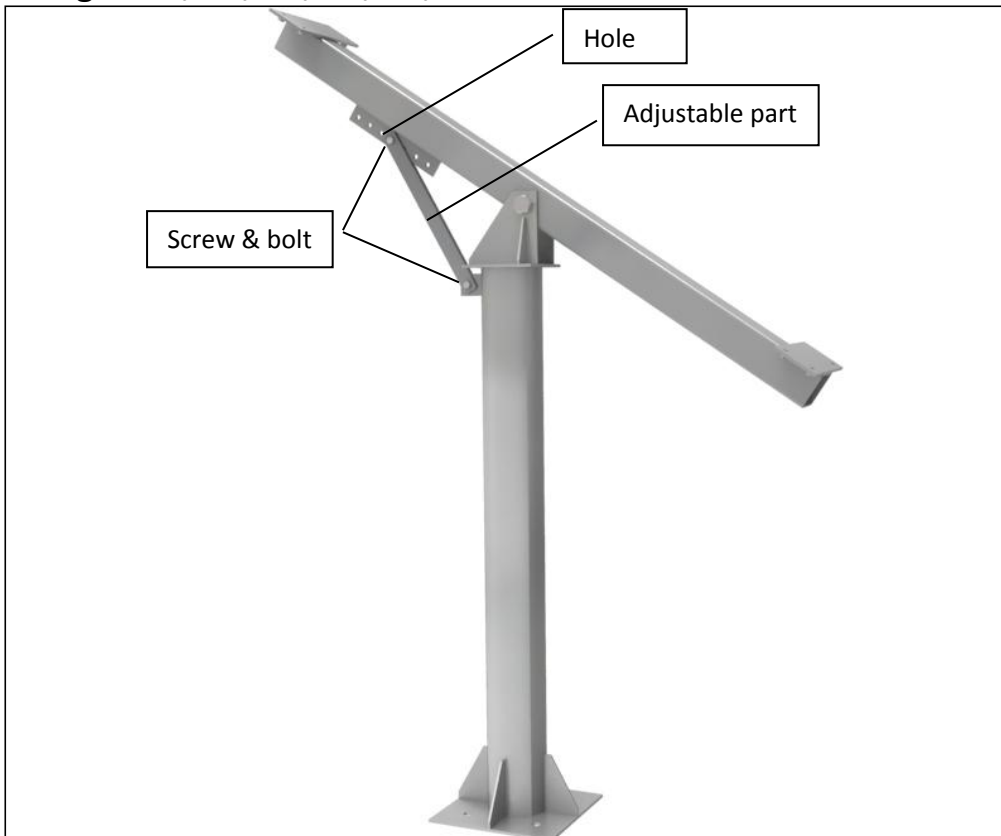
Model name	Rail	Mid Clamp	End Clamp
Picture			

Installation Steps:

1. Install the main beam on the pole with the joint bolt & screw.



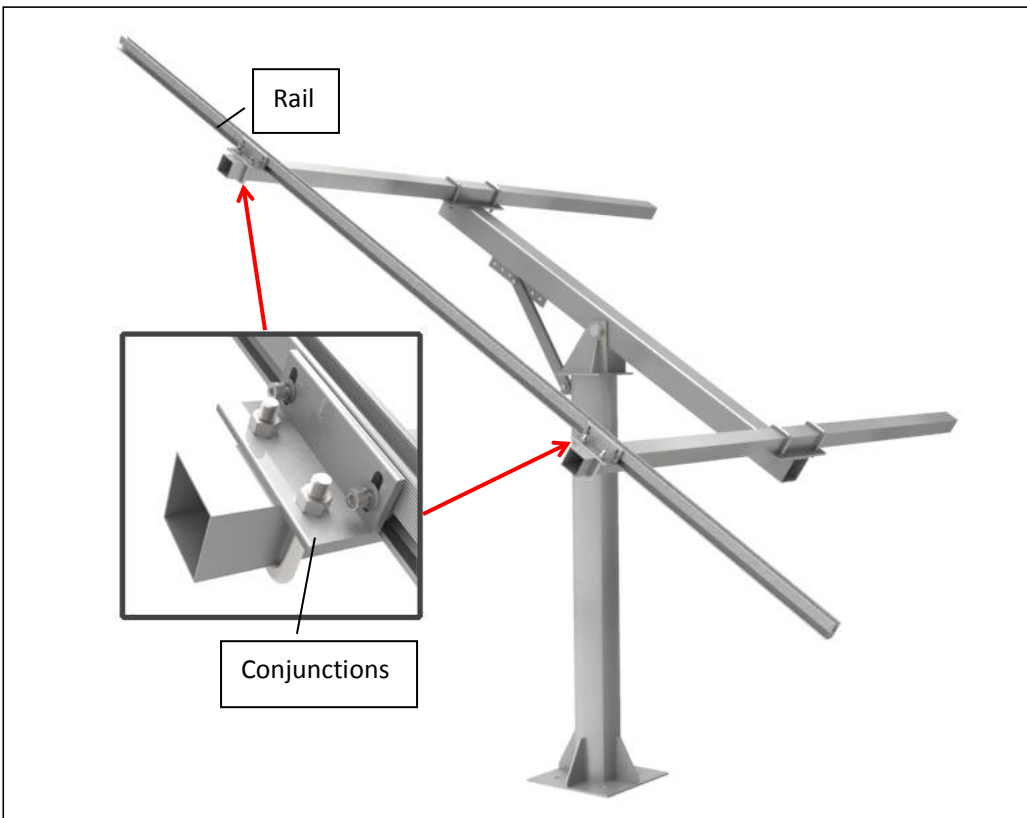
2. Install two pcs adjustable part on pole and main beam with screw & bolt, the different hole, different angle:10°,20°,30°,40°,50°,60°.



3. Fixing the support beam on main beam with 4 pcs U-screw.



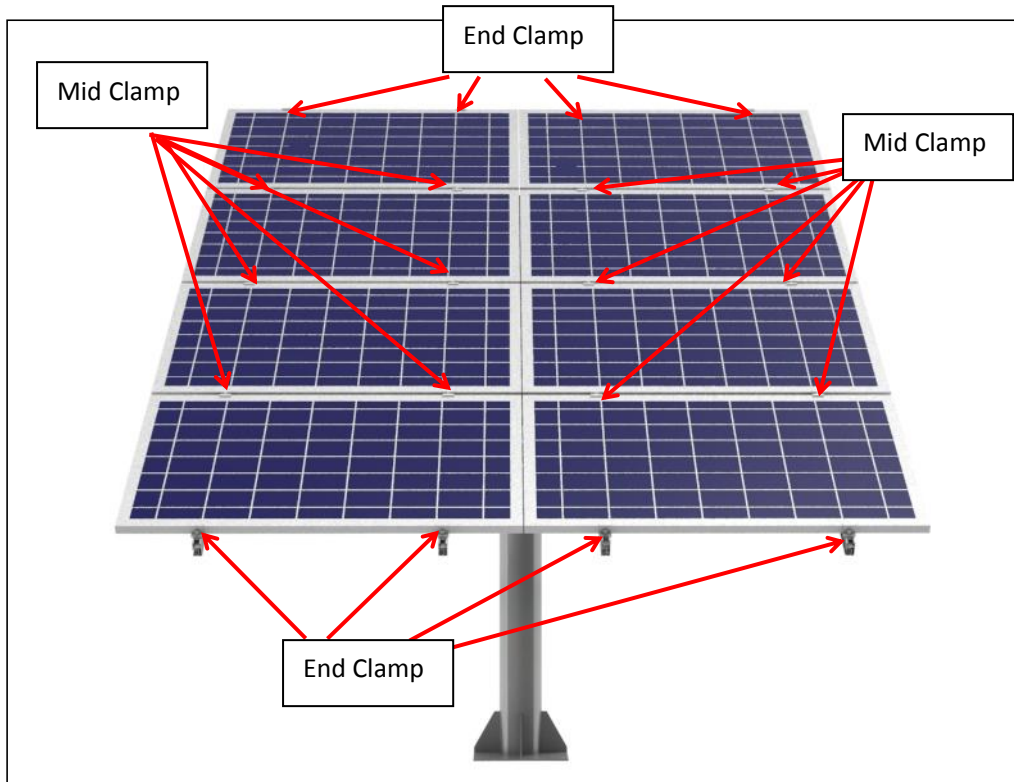
4. Fixing the rail on support beam with conjunctions.



5. Install the rest rails.



6. Fix the solar panels on the structure with mid clamp & end clamp.



Note: Nut work:

